

DIANA 165-2 **Setting Ranges and** **Technical Data**



JAGENBERG

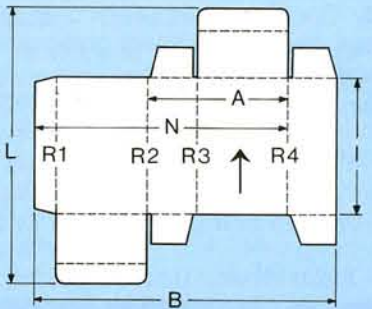
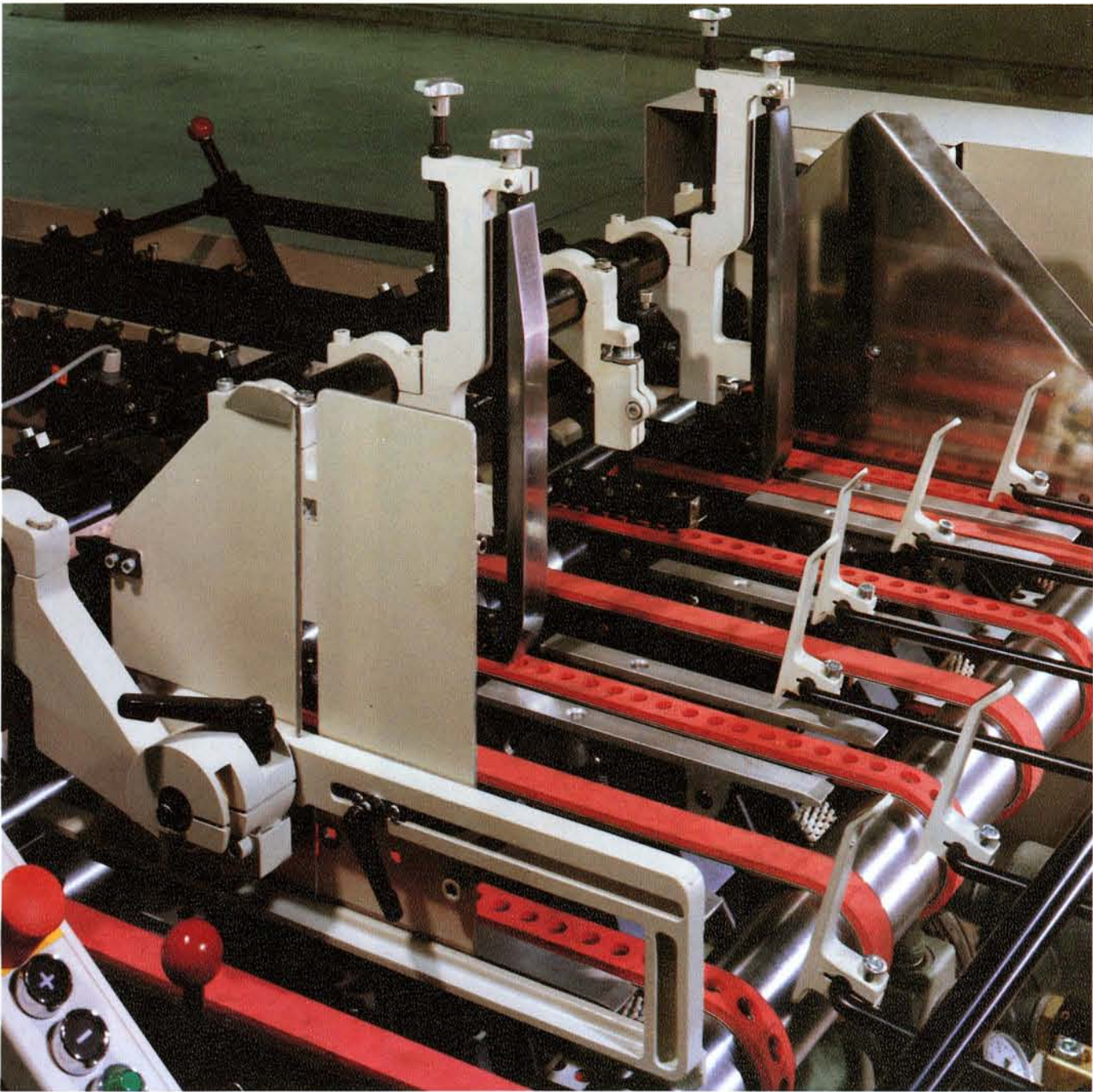
JAGENBERG AG
Machinery Division
Düsseldorf



JAGENBERG AG
Kennedydamm 15-17
Postfach 1123
D-4000 Düsseldorf 1
Tel. (211) 43 93-01
Telex 8582 741
Fax (211) 43 93 498

DIANA 165-2

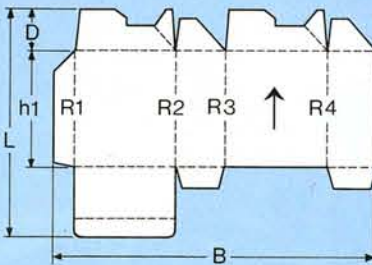
Corrugated Box Gluer **for E, B, C and A-Flute**



1. Straightline Boxes

	minimum	maximum
	mm/inch	mm/inch
A	120/ 5"	---
B	260/10-1/4"	1650/65"
L	90/ 3-1/2"	---
L	---	1150/45-1/4"
N	---	1420/55-7/8"

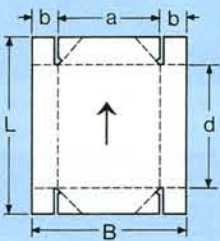
Output depends on blank variables.



2. Lockbottom Boxes

	minimum	maximum
	mm/inch	mm/inch
B	260/10-1/4"	1650/65"
L	---	1150/45-1/4"
D	30/ 1-3/16"	200/ 7-7/8"
h1	90/ 3-1/2"	---

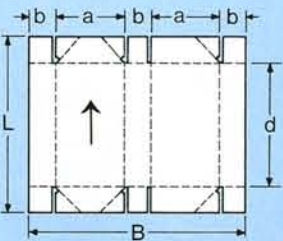
Output up to 40,000/h



3. 4-Corner Collapsible Trays

	minimum	maximum
	mm/inch	mm/inch
B	260/10-1/4"	1525/60"
L	150/ 6"	1000/39-3/8"
a	200/ 7-7/8"	1200/47-1/4"
b	30/ 1-3/16"	200/ 7-7/8"
d	90/ 3-1/2"	900/35-7/16"

Output up to 15,000/h



4. 6-Corner Collapsible Boxes

	minimum	maximum
	mm/inch	mm/inch
B	490/19-5/16"	1525/60"
L	150/ 6"	1000/39-3/8"
a	200/ 7-7/8"	---
b	30/ 1-3/16"	190/ 7-1/2"
d	90/ 3-1/2"	900/35-7/16"

Output up to 12,000/h

Other dimensions as per infotec.

Material: E-, B-, C- and A-flute corrugated board, folding boxboard and solid boxboard

Belt speed: 20-200 m/min. (65-650 fpm)

Drive rating: 15 kW

Total connected load: 36 kVA

	Length	Width	Net Weight	Shipping
	m/feet	m/feet	N (kg)	Space
DIANA 165-2 with squaring section	15/49'3"	2/6'7"	115,000 N (11,500 kg)	55
Prefolder 1	3/ 9'10"	2/6'7"	35,000 N (3,500 kg)	13
Prefolder 2	4.7/15'4"	2/6'7"	40,000 N (4,000 kg)	14

All data are approximate values.

Further details of the DIANA 165-2 and other machines in our manufacturing program are available on request.

The JAGENBERG Delivery Program for Universal Folding Carton Gluing and Packing Machines

The DIANA program comprises machines for all major carton types in a variety of price and output categories: universal high-speed machines for the most important carton styles including collapsible boxes, as well as special machines for lockbottom (crashlock) cartons, for mass-producing normal straight-line folding cartons and for manufacturing liquid-proof cartons.

The DIANA modular system permits retrofitting many accessories so that tomorrow's market demands can be met with the machine installed today.

Completing the DIANA program:
JAGFEED pre-feeder
JAPACK universal carton packer
SB collator/stacker

We live up to our claim:

JAGENBERG – Technology for a Competitive World.

Subject to alterations
Printed in West-Germany
Sch 11 L 139 1.5 02.92302

DIANA 165-2 A Proven Concept to Expand Your Product Mix

The DIANA 165-2 opens up new markets by enabling you to offer your customers a well-rounded corrugated box program.

The DIANA 165-2 does not compete with "Folder Gluers" for corrugated shipping cases. Rather, it is a valuable addition. Its main areas of application are the folding and gluing of lockbottom* and collapsible boxes (trays)*

The DIANA 165-2 is also well-suited for folding and gluing latchbot-

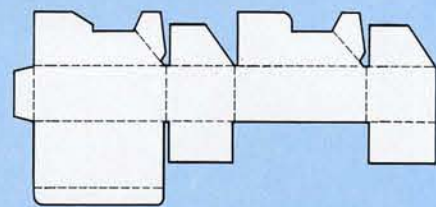
tom boxes and small to medium-sized RSC blanks, as well as particularly intricate blank shapes.

These blanks can be die-cut or slotted, with parallel or upright fluting.

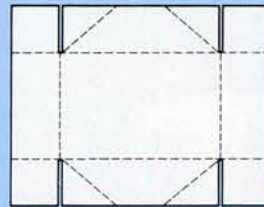
For folding and gluing all of the above box types, JAGENBERG offers the DIANA 165-2 as the ma-

chine to meet all requirements. Initially, the basic machine can be used for simple carton types and then later retrofitted with further DIANA modules to suit your growing requirements.

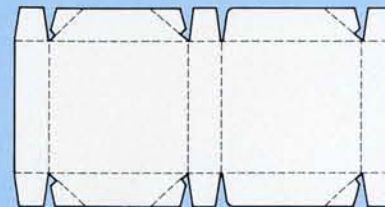
*accessory equipment



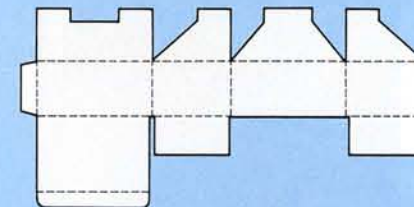
Lockbottom Box



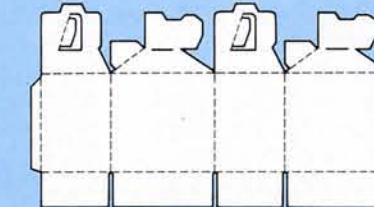
4-Corner Collapsible Tray



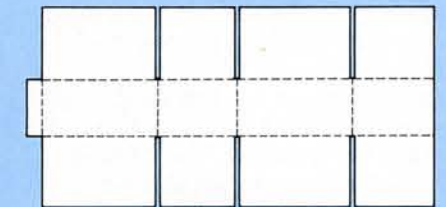
6-Corner Collapsible Box



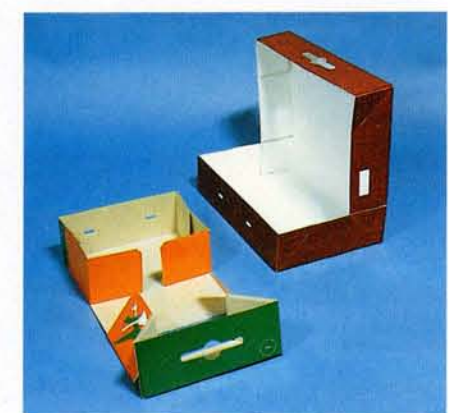
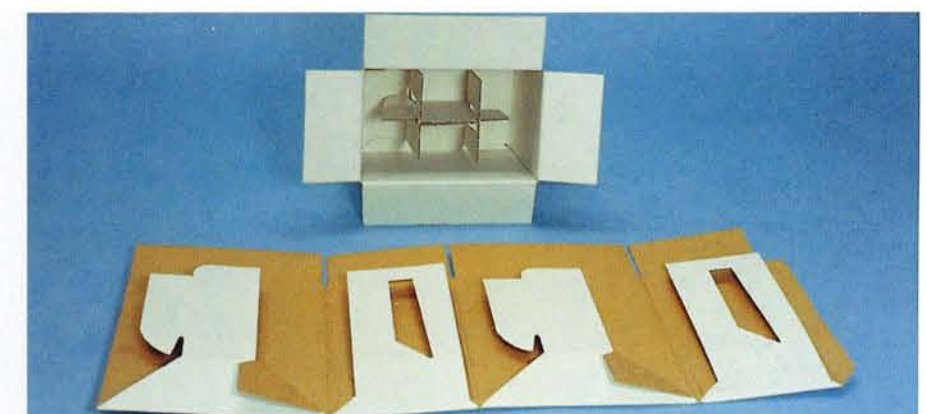
Latchbottom Box



Lockbottom Box with Partitions



RSC-container



DIANA 165-2
Extraordinarily High Folding
Accuracy



The standard DIANA 165-2 is arranged for timed and untimed operation.

Timed lifter, vacuum-assisted feeder and vibrator/jogger all support the feed belts in the feeding operation and ensure even blank flow. Immediately following the feeder, the blanks are aligned in length and lateral direction, a prerequisite for precisely folded boxes.

For rapid initial and repeat order settings, quick and secure production start-up and less waste during the makeready phase, the DIANA has been equipped with a separate makeready table and digital position indicator.

Depending on the box range, two prefolders* with differing folding lengths are available. The DIANA 165-2 can also be supplied without prefolder, if no prefolding is required. That makes for a low-priced machine combination.

The folding section is particularly

long and equipped with wide carrier and folding belts to ensure gentle, tension-free blank handling.

The DIANA 165-2 glues and folds corrugated cartons with an extraordinarily high degree of folding accuracy. This is the combined effect of post-creasing 'ironing' rollers in the feeder, heavy-duty rotary calibrating blades and vertical calibrating belts in the folding section and perfect mechanical alignment of the folded boxes in the squaring section.

The JAGENBERG Collator/Stacker SB-1* is available in several versions for automatic stack formation at the discharge end of folding box gluers and folder-gluers, with subsequent transfer to a strapper or into shipping cases. The SB-1 is suited for: folding, collapsible, lock-bottom and latchbottom boxes.

Electronics Increase Productivity and Simplify Operation

An electronic notebook* is now available for the DIANA 165-2: the operator need only select the box type and enter a few dimensions in the process control computer. All positions of the participating ma-

chine elements can then be taken from the terminal screen and transferred to the DIANA with the help of the digital position indicators. This can be done by hand or with the help of a compressed air motor.

There is virtually no limit to the box dimensions that can be memorized and retrieved for repeat orders.

A printer* can be connected to the process control computer to provide the operator with printouts of the makeready data.

A fixed disc is provided for storing the data; a floppy disc ensures backup data protection.

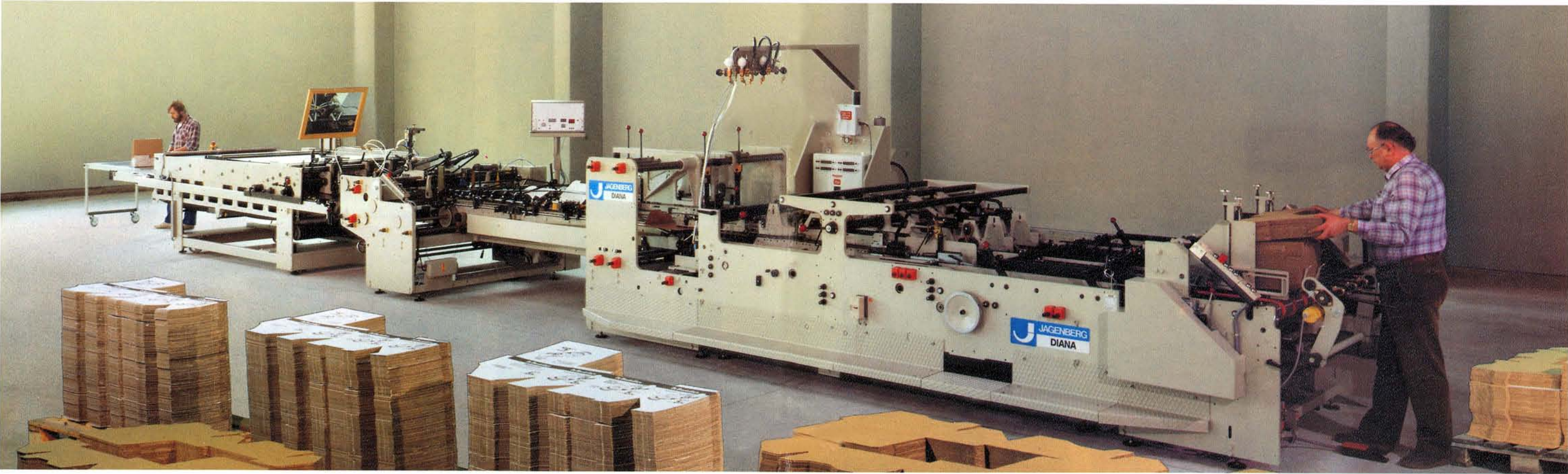


Electronic Notebook for optimum makeready calculations

*accessory equipment



Collator/Stacker SB-1*



DIANA 165-2

The Most Popular Corrugated Folding Box Gluer of Its Kind

DIANA 165-2 Technology in Detail:

1. Feeder with timed lifter, vacuum-assisted feeder and vibrator/jogger for trouble-free feeding of all blank sizes and shapes.
2. Blank squaring section for length and lateral alignment of the blanks increases accuracy and reduces waste.
3. Adjustable feed rolls for exact blank feeding; ironing rolls for perfect crease preparation to allow for subsequent alignment of the folded boxes.
4. Roller bar rapid lift-off for quick size change overs and easy clearing away of any stoppers.
- 5./6. Digital position indicators, compressed air motor and separate makeready table shorten initial and repeat makereadies and ensure quick start-up with negligible waste.
7. Bottom glue unit* with constant level switch and glue refill unit* for reliably glued seams.

*accessory equipment

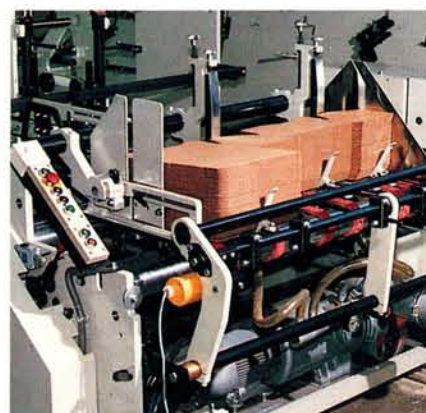
8. Overhead spot glue unit* ahead of and following the lateral folding sections* for a wide spectrum of work.
9. Electronically controlled jet glue applicator*, can be used at many points on the machine for a variety of top and bottom gluing applications.

10. Separate speed regulation of all carrier and folding belts. Some of the belts can even be regulated during production – simplifies handling complex blank shapes.
11. Calibrating unit with rotary creasing blades and vertical calibrating belts ensures extraordinarily high folding accuracy. Indispensable for parallel fluting.

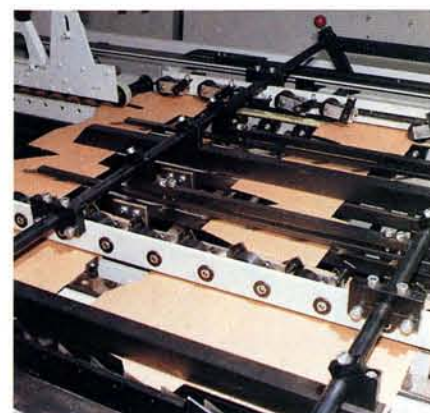
12. Electronic counter for a series of control functions: counting and marking of the boxes, stopping the machine when blanks were double fed, blank-dependent automatic speed regulation for the compression and delivery section (stacker). The latter makes for an evenly

- shingled carton stream, prevents stoppers and ensures reliable bonding of the glue seams.
13. Fixed as well as portable push-button panels, inching buttons for forwarding the blanks little by little and emergency stops by hand or foot are features incorporated in the DIANA in response to practical

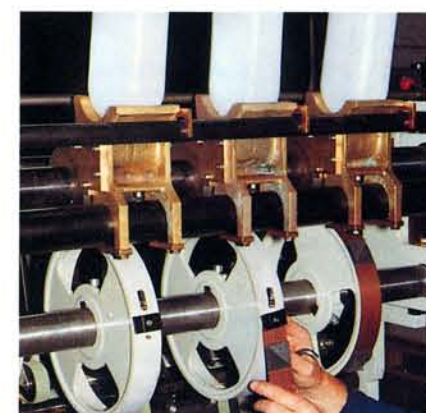
- operating conditions.
14. Compact lockbottom unit* for short makeready times and higher production figures.
15. Aligning section for squaring up the freshly glued and folded boxes.



1



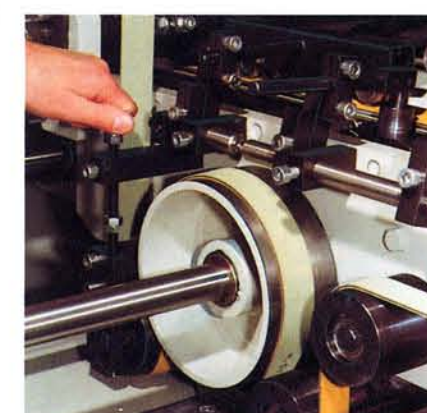
2



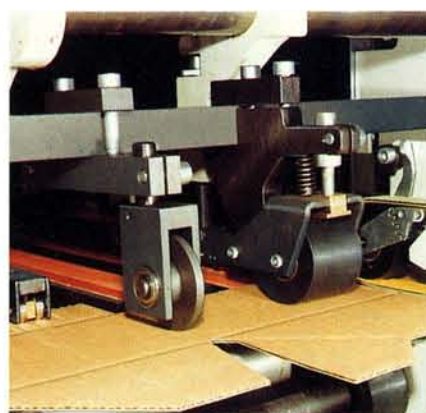
8



9



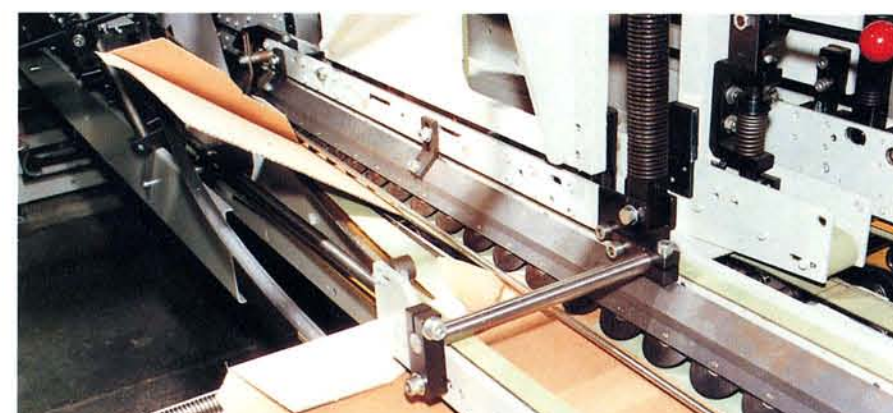
10



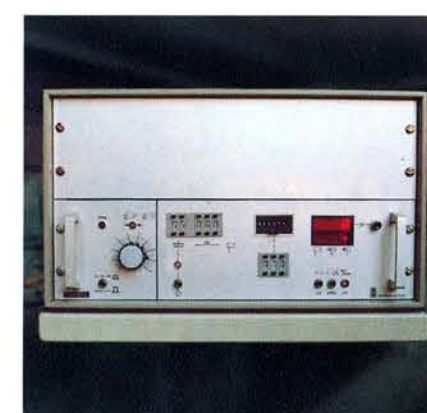
3



4



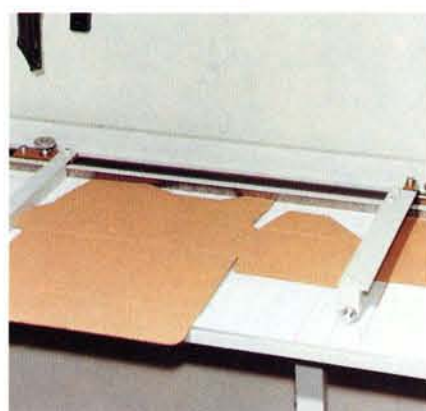
11



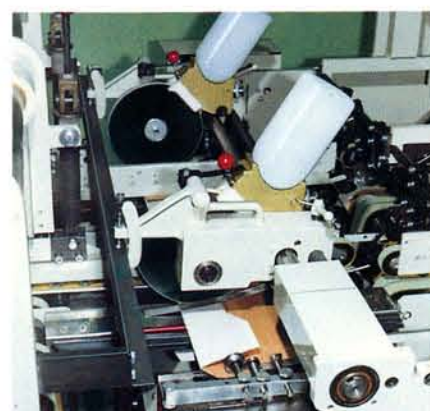
12



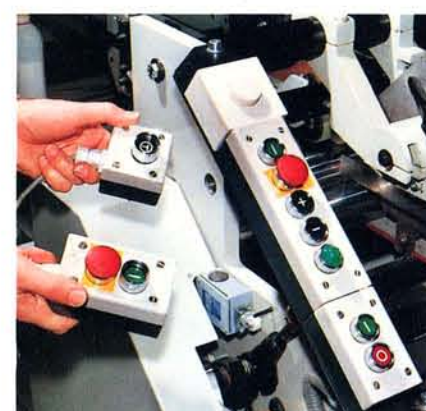
5



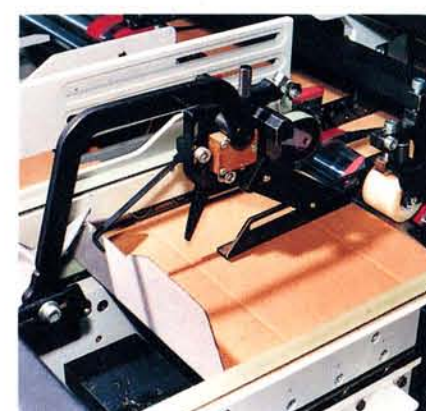
6



7



13



14



15